




Australian Hammer Supplies Hire
Unit 3/32 Williamson Road
Ingleburn
NSW 2565

CATERPILLAR CAT374FL

Major Service

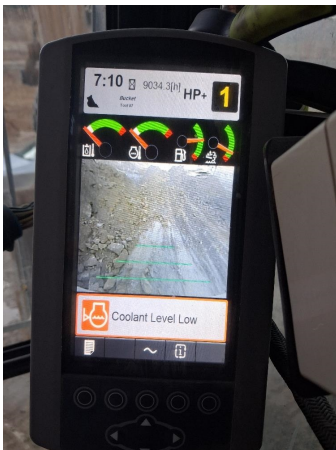
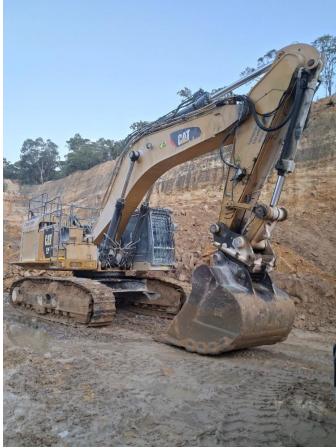
● 0 ● 97 ● 0 ● 0

Inspection Number	RP050496	Customer No	
Serial Number	EBF20063	Customer Name	
Make	CATERPILLAR	Customer Email	
Model	CAT374FL	Works Order	RP050496
Equipment Family	50.1-100T HYDRAULIC EXCAVATOR	Completed On	24/06/2025 7:22:18 PM
Asset ID	AHSH77	Inspector	Jake Raffen
Location	Australian Hammer Supplies Hire Pty Ltd 32 Williamson Road Ingleburn NSW 2565	PDF Generated On	24/06/2025
		Machine Hours	9034
		Next Meter	9015
Customer			

General Info & Comments

General Info/Comments

1000hr service -
customer
complaining of low
power



TASK SAFETY INSTRUCTIONS

- | | |
|--|---|
| 1.1 Wear Correct PPE at all times | N |
| 1.2 All isolation and safe work procedures must be followed | N |
| 1.3 Identify task hazards and controls utilising hierarchy or controls model | N |
| 1.4 Ensure a competent operator and spotter is utilised to move mobile equipment | N |
| 1.5 Ensure all mobile equipment is fundamentally stable | N |
| 1.6 Ensure three points of contact is maintained during access and egress | N |
| 1.7 Ensure acceptable housekeeping standards are maintained at all times | N |

MACHINE GENERAL RUNNINGCHECKS

● 2.1 Check all work lights, beacon & reverse alarmfor operation	P
● 2.2 Test all dash warning lights, gauges and audible alarms for correct operation	P
● 2.3 Check idle timer for correct shut down operation	P
● 2.4 Check operation of all three emergency stop buttons	P
● 2.5 Check operation of horn	P
● 2.6 Check operation of reverse camera	P
● 2.7 Check alternator charge voltage - ACTUAL_____V	P
● 2.8 Check operation of auto grease systemby manually activating timer	P
● 2.9 Check fire systemcontrol panel for 'Normal'	P

PM FIRE SUPPRESSION SYSTEM

● 5.1 Ensure fire suppression bottle and components are securely mounted and in good condition	NA
● 5.2 Ensure fire suppression is correctly charged	NA
● 5.3 Inspect last charge date - ACTUAL _____	NA
● 5.4 Check all fire extinguishers are securely mounted and in good condition	P
● 5.5 Check all fire extinguishers are correctly charged	P
● 5.6 Inspect last charge date - ACTUAL _____	P

PM ENGINE

● 6.1 Performengine valve set	NA
● 6.2 Inspect air intake systemhoses, pipes, clamps for signs of dirt ingress	FA
● 6.3 Inspect engine for oil or fuel leaks	P
● 6.4 Inspect engine components for missing clamps	P

● 6.5 Inspect exhaust systemfor signs of leaks, loose bolts or missing clamps	<i>P</i>
● 6.6 Inspect turbo for security and signs of leaks	<i>P</i>
● 6.7 Inspect condition of exhaust lagging	<i>NA</i>
● 6.8 Inspect engine mounts for condition and loose hardware	<i>P</i>
● 6.9 Inspect alternator mount condition and adjustment	<i>P</i>
● 6.10 Inspect wiring condition and security	<i>P</i>
● 6.11 Inspect engine belts	<i>P</i>

PM ENGINE COOLINGSYSTEM

● 7.1 Check coolant level	<i>FA</i>
● 7.2 Check condition of radiator cap	<i>P</i>
● 7.3 Check condition of radiator core	<i>P</i>
● 7.4 Check cooling systemfor signs of leaks	<i>FA</i>
● 7.5 Check hose and clamp condition	<i>P</i>
● 7.6 Inspect fan condition and operation	<i>P</i>
● 7.7 Inspect radiator and fan guard condition	<i>P</i>

PM SWINGTRANSMISSION

● 8.1 Inspect swing transmission for signs of leaks	<i>P</i>
● 8.2 Inspect swing transmission oil level	<i>P</i>

PM HYDRAULIC SYSTEM

● 9.1 Check hydraulic oil level	<i>P</i>
● 9.2 Inspect hydraulic cylinders for leaks and security	<i>P</i>
● 9.3 Inspect hydraulic hoses for leaks, damage, security	<i>P</i>
● 9.4 Inspect hydraulic pump condition, leaks, security	<i>P</i>

- | | | |
|---|---|---|
| ● | 9.5 Check Pilot Accumulator operation as per OEM Maintenance Procedure - Test Boom Down Functionality with engine off | P |
|---|---|---|

PM FINAL DRIVES

- | | | |
|---|---|---|
| ● | 10.1 Inspect LHS final drive mount condition for leaks and security | P |
| ● | 10.2 Inspect LHS oil level and mag plug condition | P |
| ● | 10.3 Inspect RHS final drive mount condition for leaks and security | P |
| ● | 10.4 Inspect RHS oil level and mag plug condition | P |

PM UNDERCARRIAGE

- | | | |
|---|---|---|
| ● | 11.1 Inspect LHS track tension | P |
| ● | 11.2 Inspect RHS track tension | P |
| ● | 11.3 Inspect tracks for loose/missing bolts | P |
| ● | 11.4 Inspect load and carrier rollers for signs of leaks | P |
| ● | 11.5 Inspect idlers for signs of leaks | P |
| ● | 11.6 Inspect sprocket segments condition | P |
| ● | 11.7 Inspect track frame for cracks, lose or missing hardware | P |

PM FRAME AND BODY

- | | | |
|---|---|---|
| ● | 12.1 Check panels for damage and security | P |
| ● | 12.2 Check access steps and walkway condition | P |
| ● | 12.3 Inspect boom condition – cracks, missing clamps, damaged pipes, excessive movement, lubrication | P |
| ● | 12.4 Inspect stick condition – cracks, missing clamps, damaged pipes, excessive movement, lubrication | P |
| ● | 12.5 Inspect quick hitch condition and operation | P |
| ● | 12.6 Inspect bucket condition – cracks, wear, damage, mounts | P |
| ● | 12.7 Inspect GET condition and hardware | P |

PM ELECTRICAL SYSTEM

● 13.1 Check battery condition	P
● 13.2 Check battery terminal condition	P
● 13.3 Check battery security	P
● 13.4 Check battery box drain is clear	P
● 13.5 Check wiring condition and security	P

PM GREASE SYSTEM

● 14.1 Check all points for acceptable lubrication	P
● 14.2 Inspect grease system operation	P
● 14.3 Check grease line condition	P
● 14.4 Refill grease tank	NA
● 14.5 Lubricate bucket linkage	P
● 14.6 Lubricate blade linkage	P
● 14.7 Lubricate boom & stick linkage	P
● 14.8 Lubricate swing bearing	P

PM OPERATOR STATION

● 15.1 Check all doors for correct opening and closing adjustments and operation	P
● 15.2 Inspect condition of door seals	P
● 15.3 Check window glass and seal condition	P
● 15.4 Check mirror condition and adjustments	P
● 15.5 Fill window washer reservoir	NA
● 15.6 Inspect air con vents condition	P
● 15.7 Inspect seat belt and mounting hardware	P

- | | |
|---|----|
| ● 15.8 Inspect seat condition, operation and mounting | P |
| ● 15.9 Replace cabin A/C filter | NA |

OIL SAMPLING

- | | |
|---------------|---|
| ● 16.1 Engine | N |
|---------------|---|

PM POST SERVICE INSPECTION CHECKS

- | | |
|--|---|
| ● 17.1 All inspections have been completed and rectified as required | N |
| ● 17.2 All safety related defects have been repaired or reported | N |
| ● 17.3 All defects have been noted and reported | N |
| ● 17.4 All fluids are at correct level and drain plugs tight | N |
| ● 17.5 All oil samples have visually been inspected and any notable signs of contamination have been reported | N |
| ● 17.6 All replaced filters have been cut and inspected and photos added to CAT Inspect and reported to supervisor | N |
| ● 17.7 Machine has been recommissioned and ready for operation | N |
| ● 17.8 PM service notification marked off in Vision Link | N |

DEFECTS IDENTIFIED

- | | |
|---------------------------|----|
| ● 18.1 DEFECTS IDENTIFIED | FA |
|---------------------------|----|

- | |
|--------------|
| ● Site photo |
|--------------|